

# Roxtec SK EMC transit

Transit for EMC with deep frame for angular attachment.

The Roxtec SK EMC is a cable and pipe transit ensuring electromagnetic compatibility. The transit frame has extended depth and is available in different materials and in a single or various combinations of openings. The metal frame is attached through welding and used for an angular attachment to accommodate stiff cables that do not pass in a straight angle through a deck or bulkhead. The seal allows for an increased distance between the packing space and the structure. There is a choice between Roxtec ES modules for electromagnetic shielding and PE modules that protect against conducted disturbances. The modules adapt to cables and pipes of different sizes and can be used to build in spare capacity in the seal. Roxtec EC (electrical continuity) test sticks are available to help indicate the electrical performance of the transit installation.



- Easy to maintain and inspect

**Product characteristics**



Fire rated



Watertight



Gas-tight



EMI protection

**Structure of installation**



Metal

**Mounting type**



Welding

## Ratings & certificates

**Fire**

- A-CLASS according to IMO 2010 FTP Code
- H-CLASS according to IMO 2010 FTP Code + HC fire load curve

**Tightness**

- Gas: 2.5 bar (catastrophic)
- Water: 4 bar (catastrophic)

**Supports**

- Electromagnetic shielding
- Potential equalization

## Frame dimensions

mm/kg

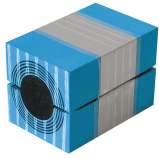
The frame variants below are a limited selection. For the full range of frames and configurations, please visit [roxtec.com](https://www.roxtec.com).

Product	Frame openings	Packing space	External dimensions WxHxD	Aperture dimensions w x h	Weight	Art. no
SK 6x1 ALU	1	120 x 180	140.5 x 238 x 100	143(+1/-1) x 240(+1/-1)	1.8	5SK0000004854
SK 6x2 ALU	2	120 x 180	271 x 238 x 100	273(+1/-1) x 240(+1/-1)	2.8	5SK0000010929
SK 6x3 ALU	3	120 x 180	401.5 x 238 x 100	404(+1/-1) x 240(+1/-1)	4	170071
SK 6x1 PRIMED	1	120 x 180	140.5 x 238 x 100	143(+1/-1) x 240(+1/-1)	5.2	5SK0000004397
SK 6x2 PRIMED	2	120 x 180	271 x 238 x 100	273(+1/-1) x 240(+1/-1)	8.3	5SK0000004504
SK 6x3 PRIMED	3	120 x 180	401.5 x 238 x 100	404(+1/-1) x 240(+1/-1)	11	5SK0000004399
SK 6x1 AISI316	1	120 x 180	140.5 x 238 x 100	143(+1/-1) x 240(+1/-1)	5.3	5SK0000007066
SK 6x2 AISI316	2	120 x 180	271 x 238 x 100	273(+1/-1) x 240(+1/-1)	9	5SK0000003590
SK 6x3 AISI316	3	120 x 180	401.5 x 238 x 100	404(+1/-1) x 240(+1/-1)	11.8	5SK0000004198



# Sealing components

## Sealing components



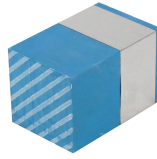
RM ES module with  
Multidiameter™



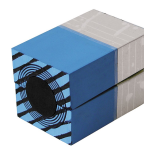
Lubricant



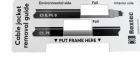
Wedge & Wedgekit ES



RM ES solid compensation  
module



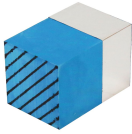
RM PE module with  
Multidiameter™



Accessories ES and BG



Holder tools



RM PE solid compensation  
module



Wedge & Wedgekit



Stayplate



ES sealing kit



Welding tools

For detailed information, please visit [roxtec.com](https://www.roxtec.com).

The product information provided by Roxtec does not release the purchaser of the Roxtec system, or part thereof, from the obligation to independently determine the suitability of the products for the intended process, installation and/or use.

Roxtec gives no guarantee for the Roxtec system or any part thereof and assumes no liability for any loss or damage whatsoever, whether direct, indirect, consequential, loss of profit or otherwise, occurred or caused by the Roxtec systems or installations containing components not manufactured by an authorized manufacturer and/or occurred or caused by the use of the Roxtec system in a manner or for an application other than for which the Roxtec system was designed or intended.

Roxtec expressly excludes any implied warranties of merchantability and fitness for a particular purpose and all other express or implied representations and warranties provided by statute or common law. User determines suitability of the Roxtec system for intended use and assumes all risk and liability in connection therewith. In no event shall Roxtec be liable for indirect, consequential, punitive, special, exemplary or incidental damages or losses.

The Roxtec products are offered and sold in accordance with the conditions of the Roxtec General Terms of Sales. The latest version of the Roxtec General Terms of Sales can be downloaded from <https://www.roxtec.com/en/about-us/about-roxtec/general-terms-of-sales/>

We reserve the right to make changes to the product and technical information without further notice. Any errors in print or entry are no claims for indemnity. The content of this publication is the property of Roxtec International AB and is protected by copyright.

This document was generated on: 2024-04-27